



## 2 PIECES SPLIT BODY STAINLESS STEEL BALL VALVES FLANGED PN16/40 DIN 3202-1 F4/F5

2 pieces stainless steel Split body ball valve with full bore for Chemical industries, petrochemical industries, hydraulic installation, heating, water distribution, compressed air.

PTFE filled with 15% glass seat for a temperature up to +180°C.

Double antistatic device.

Handling possible with gearbox.

Thanks to the ISO 5211 plate, an actuator can be installed on the valve.



**Size :** DN15 to DN150

**Connection :** Flanged PN16/40 RF

**Min Temperature :** -10°C

**Max Temperature :** +180°C

**Max Pressure :** 40 bars up to DN50, 16 bars over

**Specifications :** Double Antistatic device

ISO 5211 mounting pad

Anti blow-out stem, full bore

PTFE filled with 15% glass seat

**Materials :** Stainless steel ASTM A351 CF8M

---



**2 PIECES SPLIT BODY STAINLESS STEEL BALL VALVES FLANGED PN16/40 DIN 3202-1 F4/F5**

**SPECIFICATIONS :**

- Full bore
- Anti blow-out stem
- Double antistatic device
- PTFE filled with 15% glass seat
- Handle with locking device up to DN50
- ISO 5211 mounting pad
- 2 pieces type ( Split body )
- Hollow ball for DN125 and DN150

**USE :**

- Chemical industries, petrochemical industries, hydraulic installation, heating and water distribution
- Min and max Temperature Ts : -10°C to + 180°C
- Max pressure Ps : 40 bars up to DN50, 16 bars over

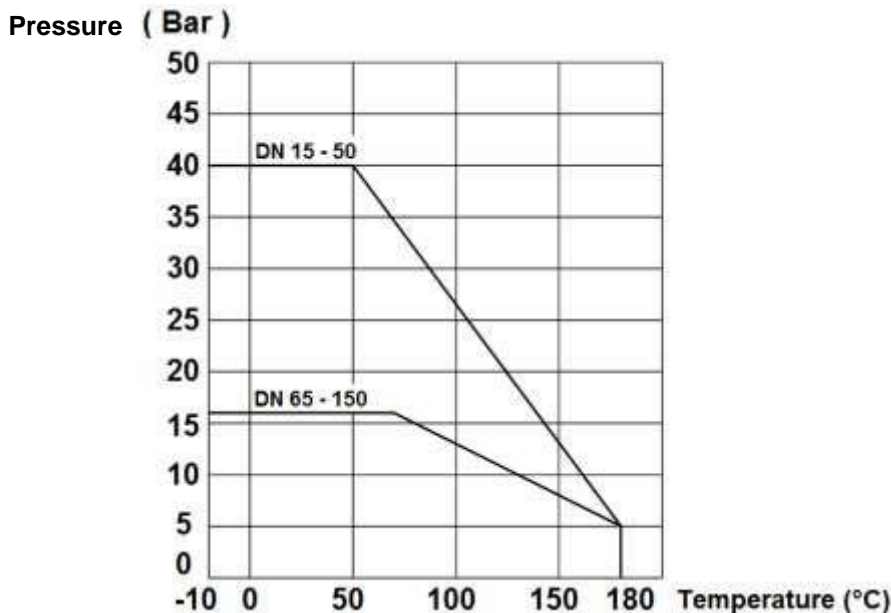
**RANGE :**

- Ball valve with stainless steel body from DN 15 to DN 150

**ENDS :**

- R.F. flanges PN40 up to DN50, PN16 over

**PRESSURE / TEMPERATURE GRAPH ( STEAM EXCLUDED ) :**



**TORQUE VALUES ( in Nm without safety coefficient ) :**

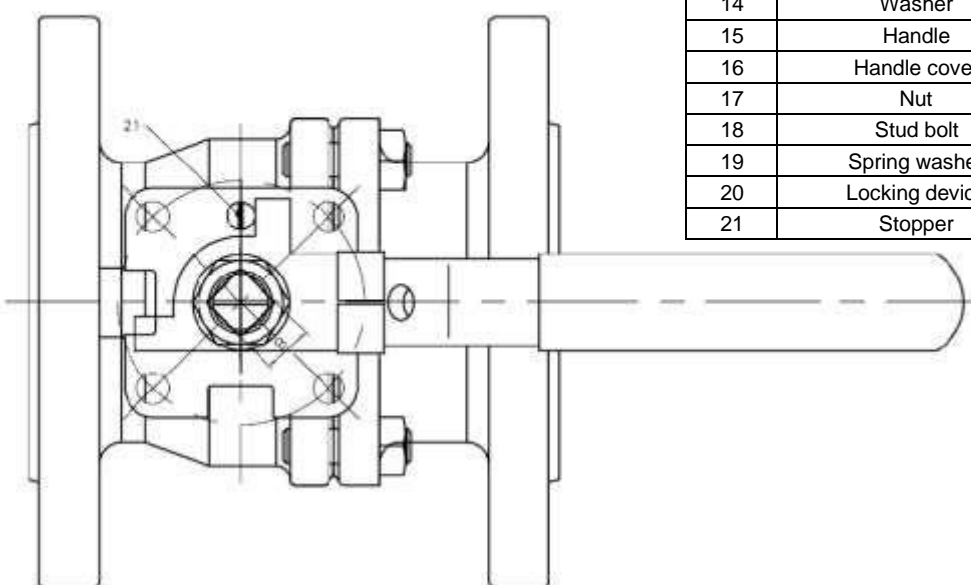
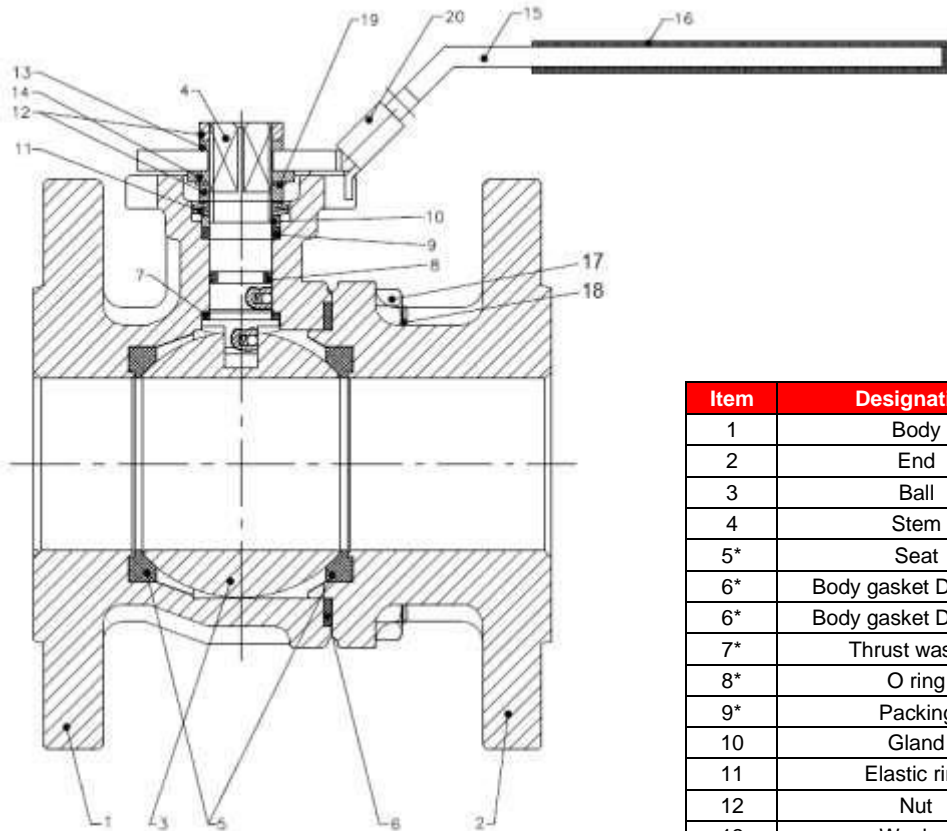
DN	15	20	25	32	40	50	65	80	100	125	150
Torque ( Nm )	6	8	10	14	20	30	36	60	95	150	210



2 PIECES SPLIT BODY STAINLESS STEEL BALL VALVES FLANGED PN16/40 DIN 3202-1 F4/F5

**MATERIALS DN 15 - 50 :**

**Repairability :**



*Gasket kits (items 5, 6, 7, 8 and 9)	
DN (mm)	
	15
	20
	25
	32
	40
	50

Item	Designation	Materials
1	Body	ASTM A351 CF8M
2	End	
3	Ball	AISI 316
4	Stem	
5*	Seat	PTFE filled with 15% glass fiber
6*	Body gasket DN15-32	PTFE filled with 15% graphite
6*	Body gasket DN40-50	AISI 304 + graphite
7*	Thrust washer	PTFE filled with 15% graphite
8*	O ring	FKM
9*	Packing	PTFE
10	Gland	AISI 304
11	Elastic ring	AISI 301
12	Nut	AISI 304
13	Washer	
14	Washer	
15	Handle	Plastic
16	Handle cover	
17	Nut	AISI 304
18	Stud bolt	
19	Spring washer	
20	Locking device	
21	Stopper	

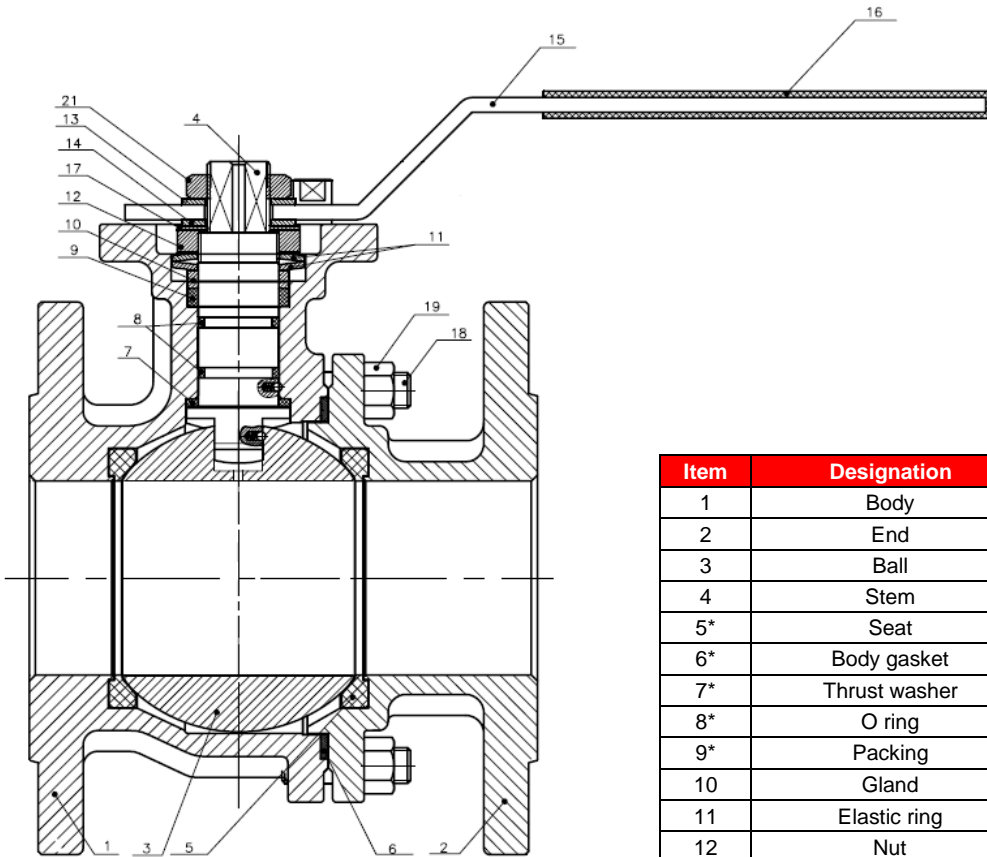
(\* : Included in gaskets kit )



2 PIECES SPLIT BODY STAINLESS STEEL BALL VALVES FLANGED PN16/40 DIN 3202-1 F4/F5

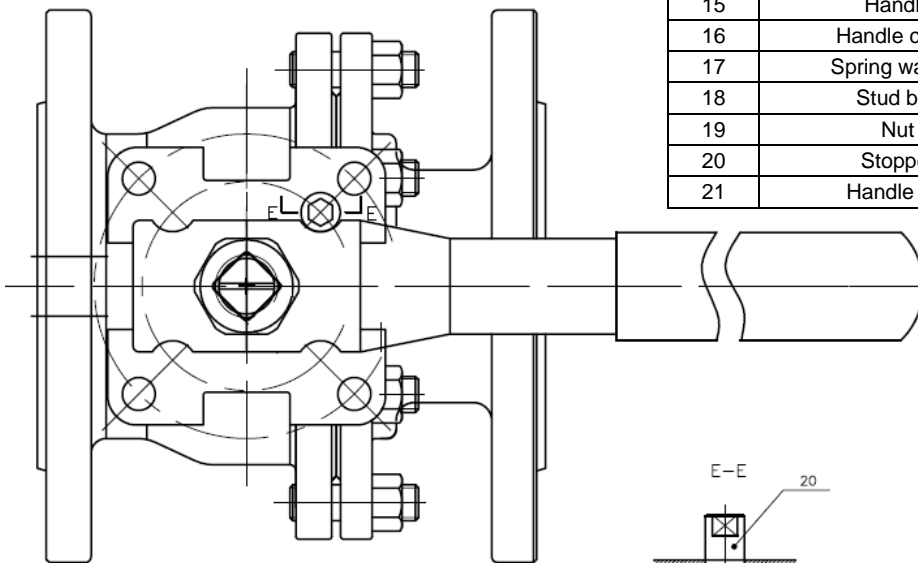
**MATERIALS DN 65 - 100 :**

**Repairability :**



*Gasket kits (items 5, 6, 7, 8 and 9)	
DN (mm)	
65	
80	
100	

Item	Designation	Materials
1	Body	ASTM A351 CF8M
2	End	
3	Ball	AISI 316
4	Stem	
5*	Seat	PTFE filled with 15% glass fiber
6*	Body gasket	AISI 304 + graphite
7*	Thrust washer	PTFE filled with 15% graphite
8*	O ring	FKM
9*	Packing	PTFE
10	Gland	AISI 304
11	Elastic ring	AISI 301
12	Nut	AISI 304
13	Washer	
14	Washer	
15	Handle	
16	Handle cover	Plastic
17	Spring washer	AISI 304
18	Stud bolt	
19	Nut	
20	Stopper	
21	Handle nut	



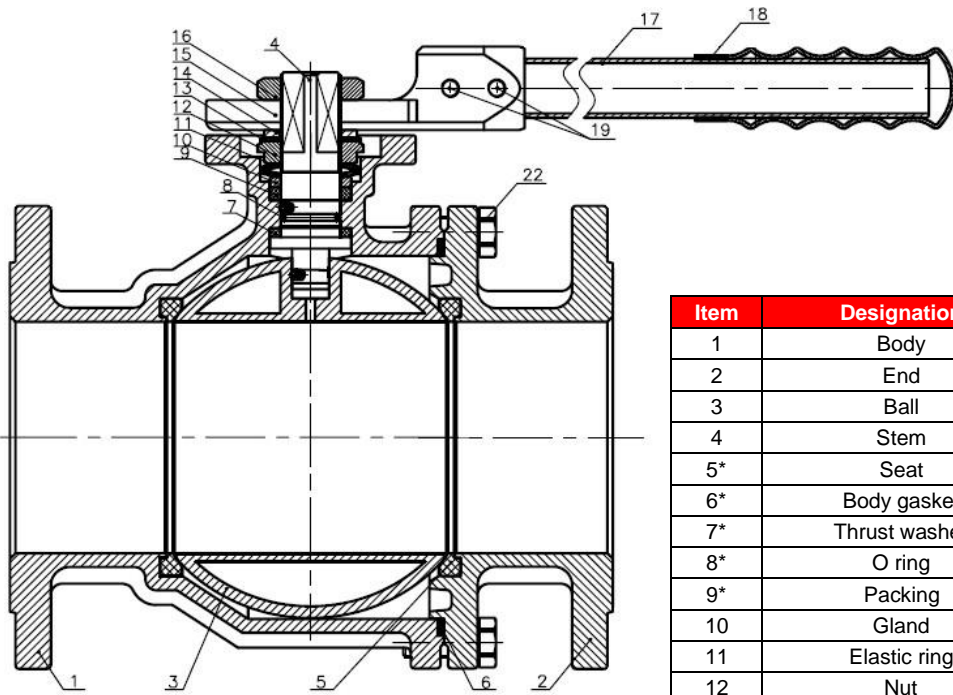
(\* : Included in gaskets kit)



2 PIECES SPLIT BODY STAINLESS STEEL BALL VALVES FLANGED PN16/40 DIN 3202-1 F4/F5

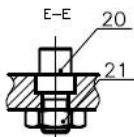
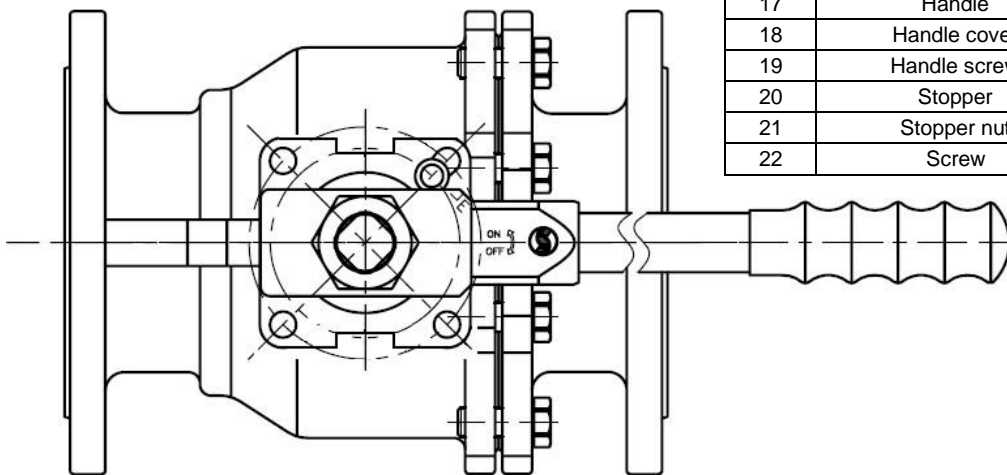
**MATERIALS DN 125 - 150 :**

**Repairability :**



*Gasket kits (items 5, 6, 7, 8 and 9)	
DN (mm)	
	125
	150

Item	Designation	Materials
1	Body	ASTM A351 CF8M
2	End	
3	Ball	AISI 316
4	Stem	PTFE filled with 15% glass fiber
5*	Seat	
6*	Body gasket	AISI 304 + graphite
7*	Thrust washer	PTFE filled with 15% graphite
8*	O ring	FKM
9*	Packing	PTFE
10	Gland	AISI 304
11	Elastic ring	AISI 301
12	Nut	ASTM A351 CF8
13	Spring washer	AISI 304
14	Washer	AISI 304
15	Handle adaptor	ASTM A351 CF8
16	Nut	ASTM A351 CF8
17	Handle	AISI 304
18	Handle cover	Plastic
19	Handle screw	AISI 304
20	Stopper	
21	Stopper nut	
22	Screw	



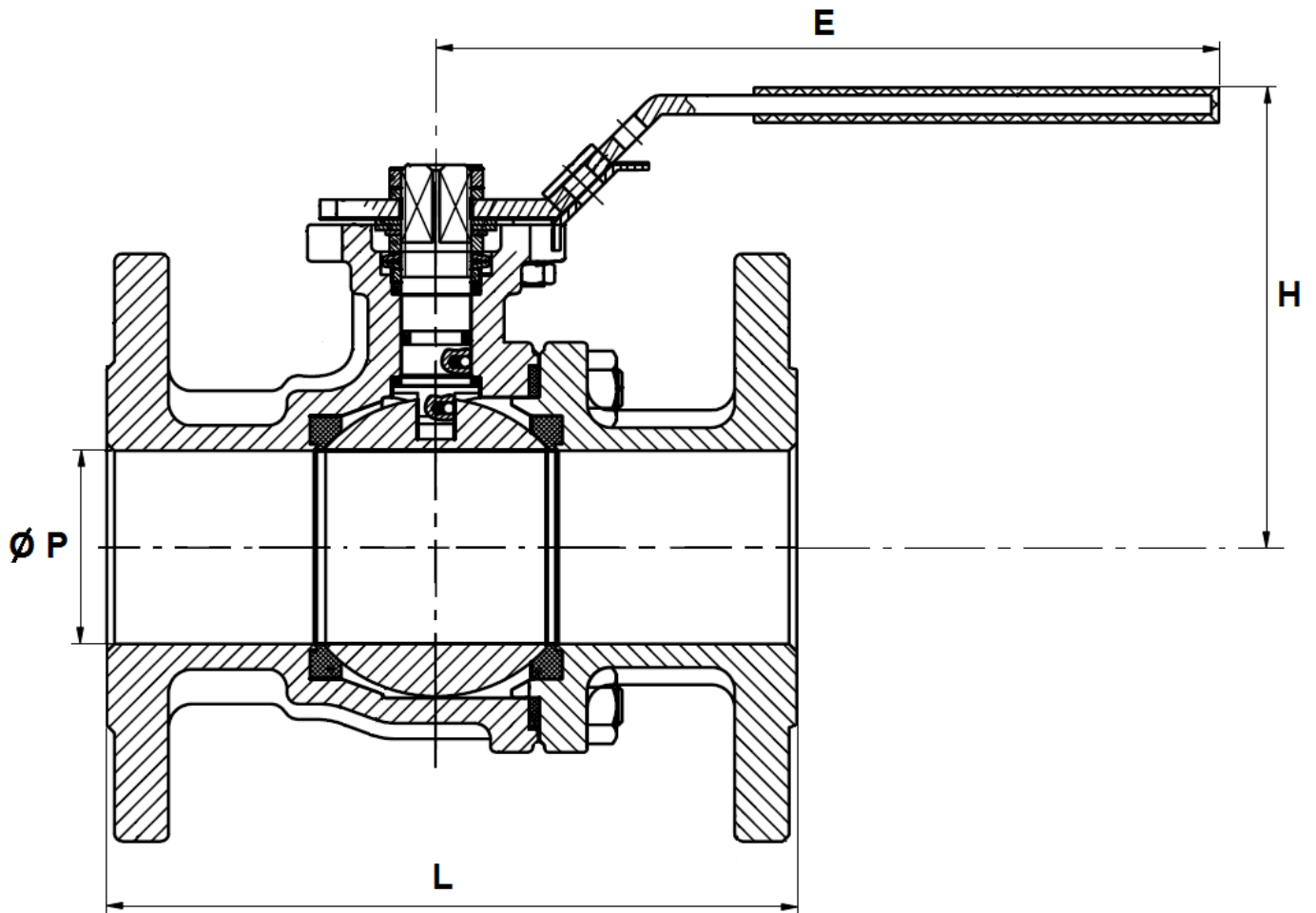
(\* : Included in gaskets kit )



2 PIECES SPLIT BODY STAINLESS STEEL BALL VALVES FLANGED PN16/40 DIN 3202-1 F4/F5

SIZE DN 15 - 50 ( in mm ):

**DN 15 - 50**



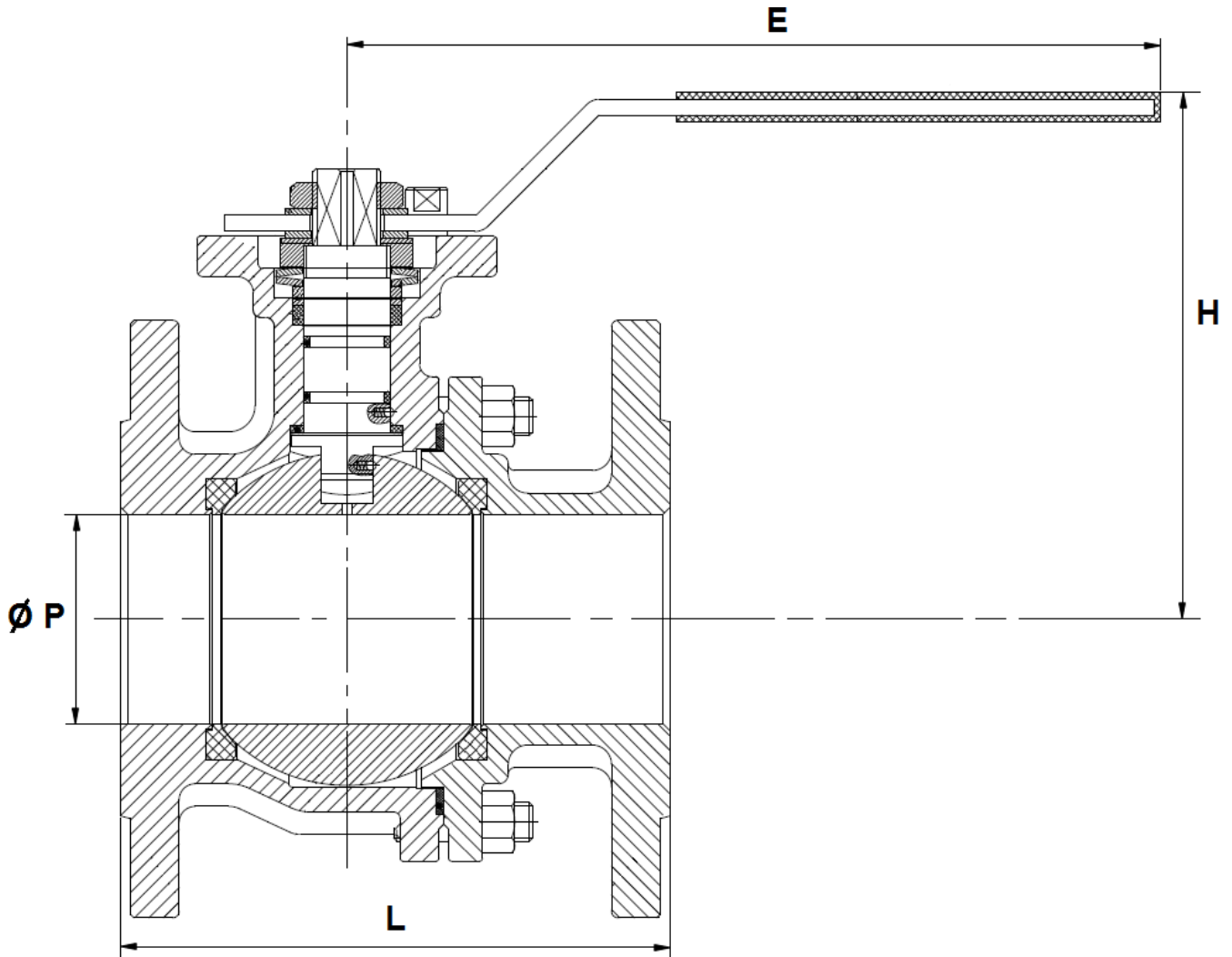
DN	15	20	25	32	40	50
Ø P	15	20	25	32	40	50
L	115	120	125	130	140	150
E	161.2	161.2	161.2	204.5	204.5	204.5
H	82.7	83.2	88.2	111	112	120
Weight (in Kg)	2.2	3.02	3.79	5.74	6.79	9.33



2 PIECES SPLIT BODY STAINLESS STEEL BALL VALVES FLANGED PN16/40 DIN 3202-1 F4/F5

SIZE DN 65 - 100 ( in mm ):

**DN 65 - 100**



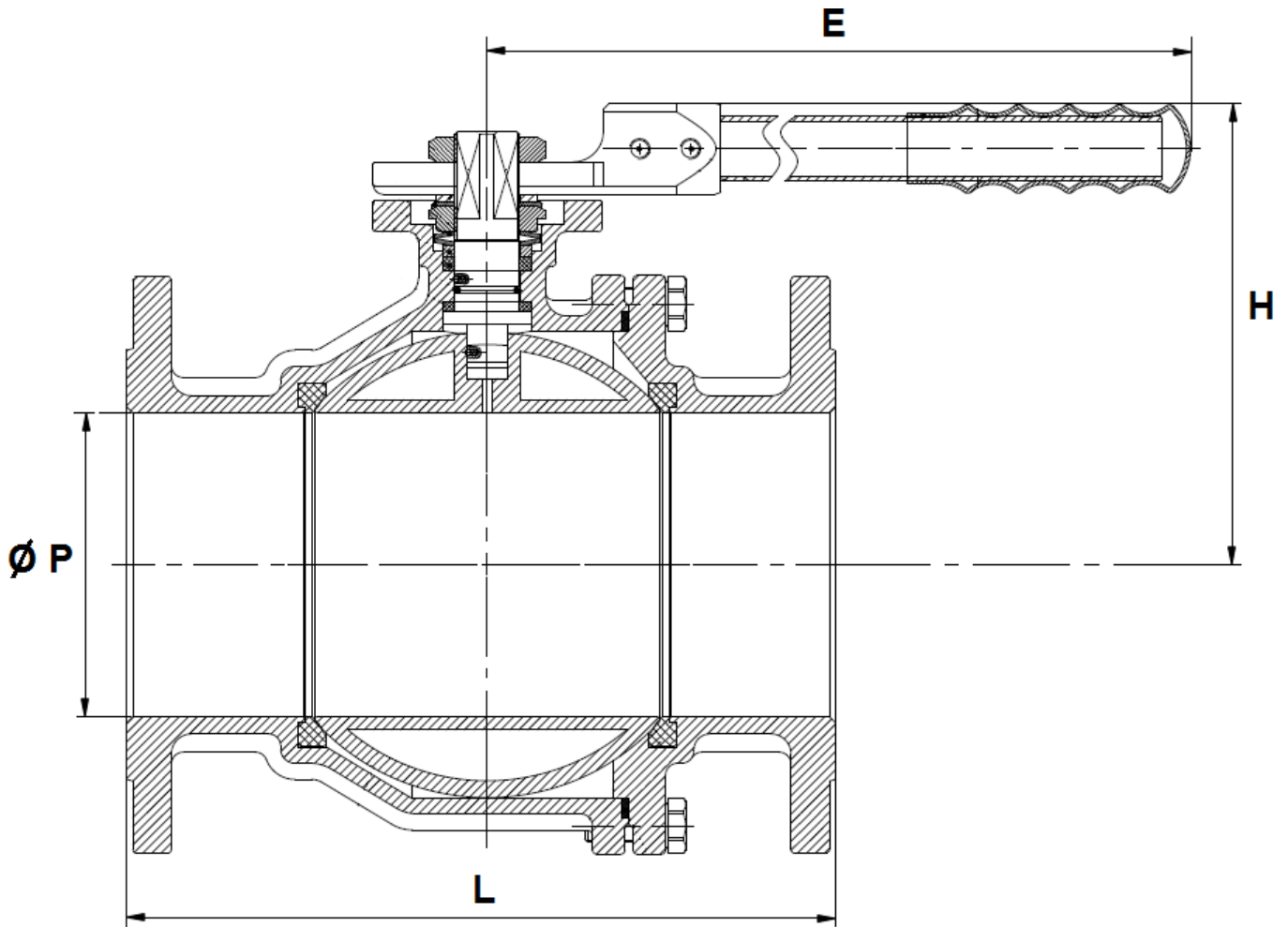
DN	65	80	100
$\text{Ø P}$	65	80	100
L	170	180	190
E	325	325	325
H	160	170	186
Weight (in Kg)	15.2	19.58	27.36



2 PIECES SPLIT BODY STAINLESS STEEL BALL VALVES FLANGED PN16/40 DIN 3202-1 F4/F5

SIZE DN 125 - 150 (in mm) :

**DN 125 - 150**



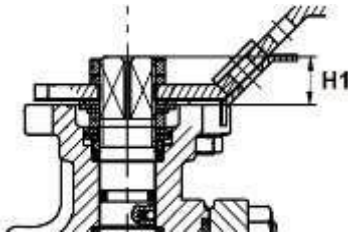
DN	125	150
Ø P	125	150
L	325	350
E	520	620
H	211	228
Weight (in Kg)	38.86	50.72



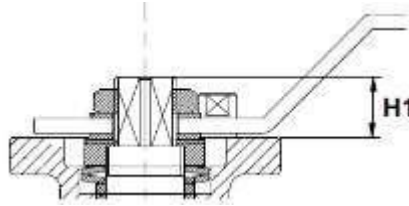
2 PIECES SPLIT BODY STAINLESS STEEL BALL VALVES FLANGED PN16/40 DIN 3202-1 F4/F5

**ISO MOUNTING PAD AND STEM SIZE ( in mm ) :**

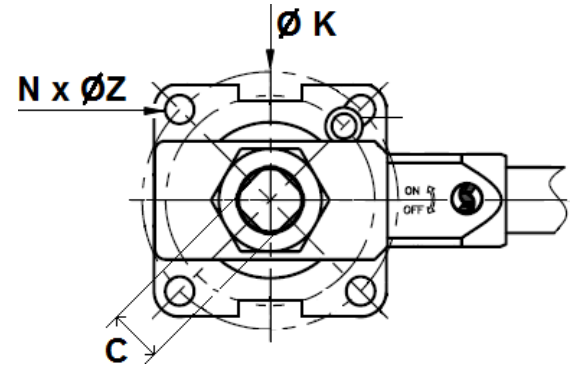
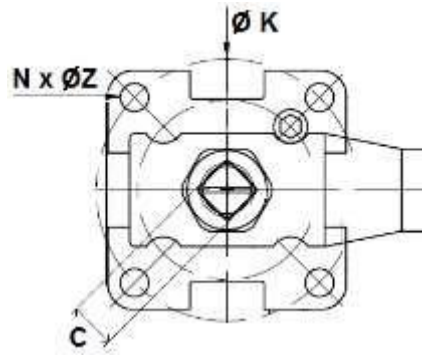
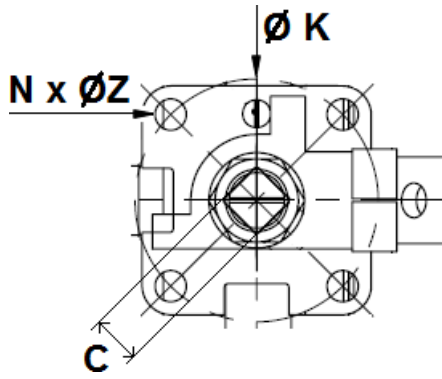
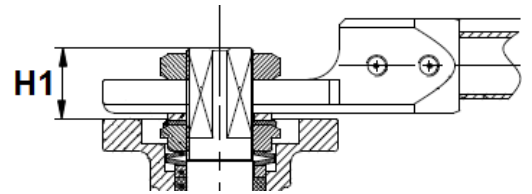
**DN 15 – 50**



**DN 65 – 100**



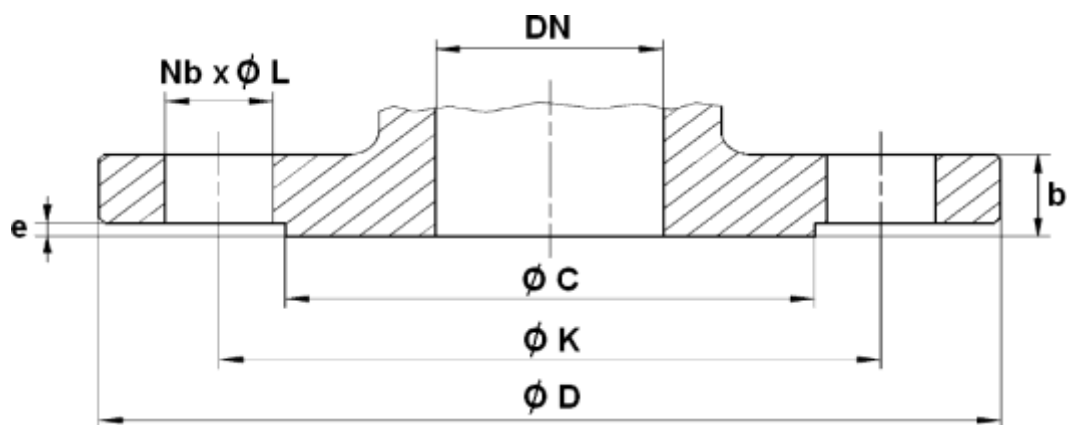
**DN 125 – 150**



DN	15	20	25	32	40	50	65	80	100	125	150
C	9	9	11	14	14	14	17	17	17	27	27
Ø K	42	42	50	50	70	70	102	102	102	125	125
ISO	F04	F04	F05	F05	F07	F07	F10	F10	F10	F12	F12
N x Ø Z	4x6	4x6	4x7	4x7	4x9	4x9	4x11	4x11	4x11	4x14	4x14
H1	11	10	11	16.5	16.5	16.5	21	21	21	34	34

2 PIECES SPLIT BODY STAINLESS STEEL BALL VALVES FLANGED PN16/40 DIN 3202-1 F4/F5

**FLANGES SIZE (in mm):**



DN	15	20	25	32	40	50	65	80	100	125	150
Ø C	45	58	68	78	88	102	122	138	158	188	212
Ø D	95	105	115	140	150	165	185	200	220	250	285
Ø K	65	75	85	100	110	125	145	160	180	210	240
Nb x Ø L	4 x 14	4 x 14	4 x 14	4 x 18	4 x 18	4 x 18	4 x 18	8 x 18	8 x 18	8 x 18	8 x 22
b	16	18	18	18	18	20	18	20	20	22	22
e	2	2	2	2	3	3	3	3	3	3	3

## 2 PIECES SPLIT BODY STAINLESS STEEL BALL VALVES FLANGED PN16/40 DIN 3202-1 F4/F5

### **STANDARDS :**

- Manufacturer certified ISO 9001 : 2015
  - DIRECTIVE 2014/68/EU: For liquids or Gas of Group 1
    - DN15-25 : Article 4, §3 (SEP), no CE marking
    - DN32-150 : Risk category II, CE 0035 marking
  - Certificate 3.1 on request
  - Designing according to EN 12516-1
  - Tests according to API 598, table 6
  - Flanges R.F. according to EN 1092-1 PN16
  - ISO 5211 mounting pad
  - Length according to EN 558 series 27 ( DIN 3202-1 F4 up to DN100, F5 over )
- 
-