



## 3 PIECES STAINLESS STEEL BALL VALVE BW INITIAL RANGE

3 pieces stainless steel ball valve with full bore for Chemical industries, petrochemical industries, hydraulic installation, heating, water distribution and compressed air.  
PTFE packing and gasket, PTFE filled with 15% glass seat.  
Removable central part for an easy maintenance.



**Size :** DN8 to DN100  
**Connection :** BW  
**Min Temperature :** -20°C  
**Max Temperature :** +180°C  
**Max Pressure :** 63 bars (up to DN20)  
**Specifications :** 3 pieces type  
PTFE filled with 15% glass seat  
Anti blow-out stem  
Full bore

**Materials :** Stainless Steel ASTM A351 CF8M

---



## 3 PIECES STAINLESS STEEL BALL VALVE BW INITIAL RANGE

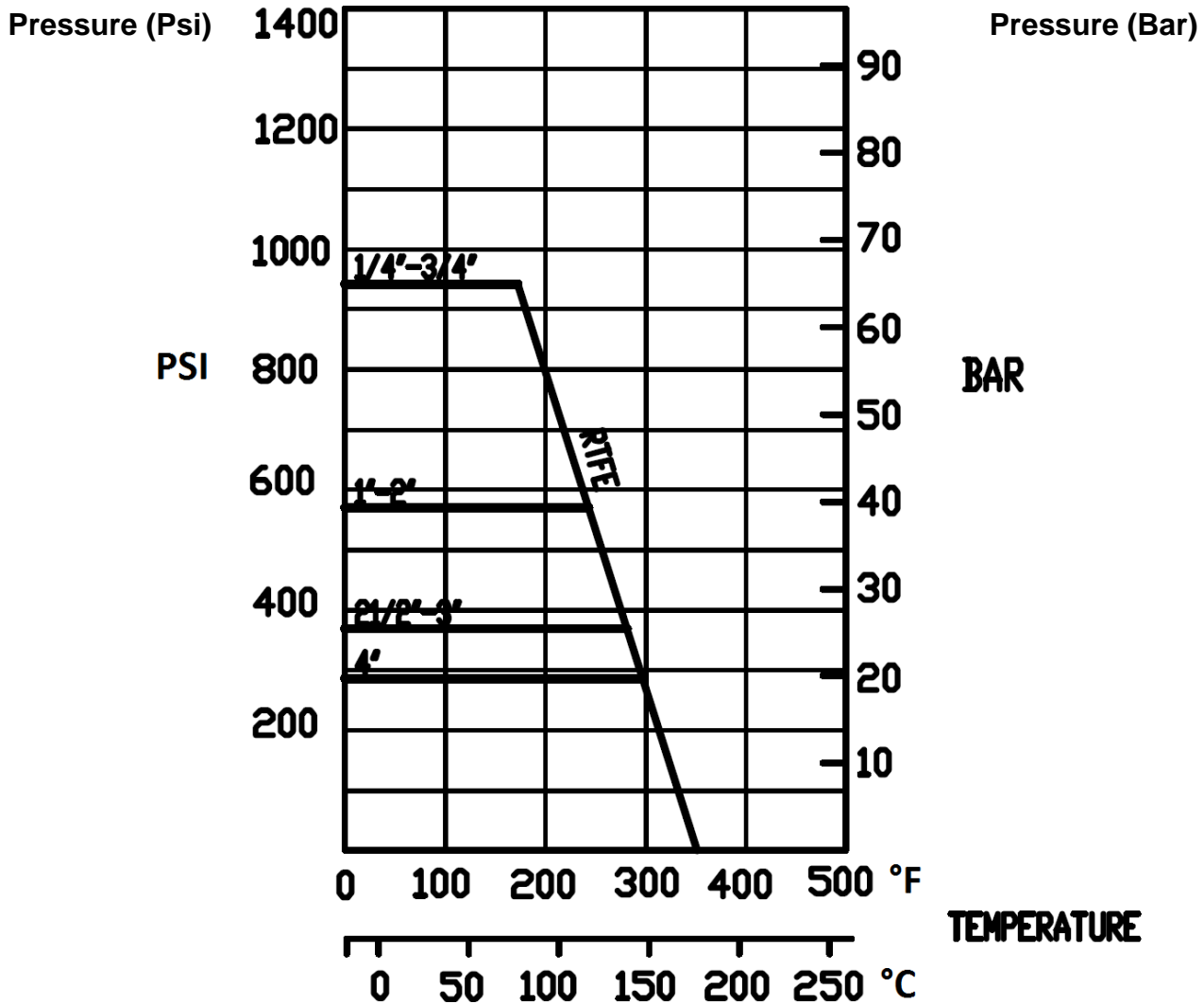
### SPECIFICATIONS :

- Full bore
- Anti blow-out stem
- PTFE packing
- Locking device
- Stem extension in AISI 304 ( option )

### USE :

- Chemical and pharmaceutical industries, petrochemical industries, hydraulic installation, compressed air
- Min and max Temperature Ts : -20°C to + 180°C
- Max Pressure Ps : 63 bars up to DN20, 40 bars from DN25 to 50, 25 bars from DN65 to 80 and 20 bars for DN100 (see graph under)
- Compressed air : 10 bars max
- Do not use with steam

### PRESSURE / TEMPERATURE GRAPH ( STEAM AND COMPRESSED AIR EXCLUDED ) :





## 3 PIECES STAINLESS STEEL BALL VALVE BW INITIAL RANGE

### TORQUE VALUES ( In Nm without safety coefficient ) :

DN	8	10	15	20	25	32	40	50	65	80	100
Torque (Nm)	2	2	2.5	3.5	6	7	12	16	40	50	70

### BOLT TIGHTENING TABLE ( in Nm) :

DN	8	10	15	20	25	32	40	50	65	80	100
Torque (Nm)	4	4	8	8	10	13	20	20	35	45	65

### FLOW COEFFICIENT Kvs ( M3 / h ) :

DN	8	10	15	20	25	32	40	50	65	80	100
Kvs ( m3/h )	5.2	5.2	20.7	30.2	40.6	70	90.8	208.4	275.9	501.6	865

### RANGE :



- Stainless steel 3 pieces ball valve Initial Range BW **Ref. 791** from DN8 to DN100



- AISI 304 stem extension **Ref.9810611-9810614** from DN8 to DN50



- Blue handle cover **Ref. 9830584-9830588** from DN15 to DN100

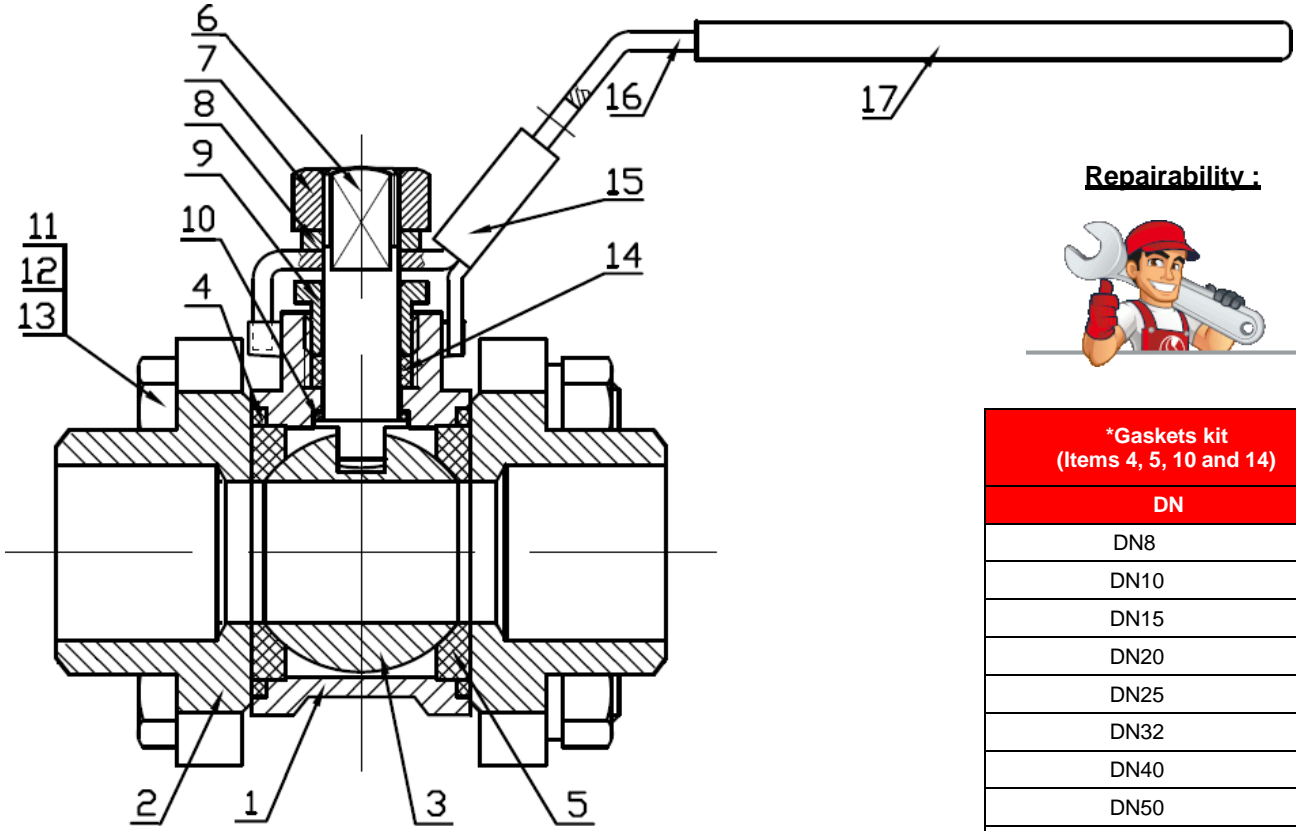
### CONNECTION :

- BW
-



**3 PIECES STAINLESS STEEL BALL VALVE BW INITIAL RANGE**

**MATERIALS :**



**Repairability :**



*Gaskets kit (Items 4, 5, 10 and 14)	
DN	
DN8	
DN10	
DN15	
DN20	
DN25	
DN32	
DN40	
DN50	
DN65	
DN80	
DN100	

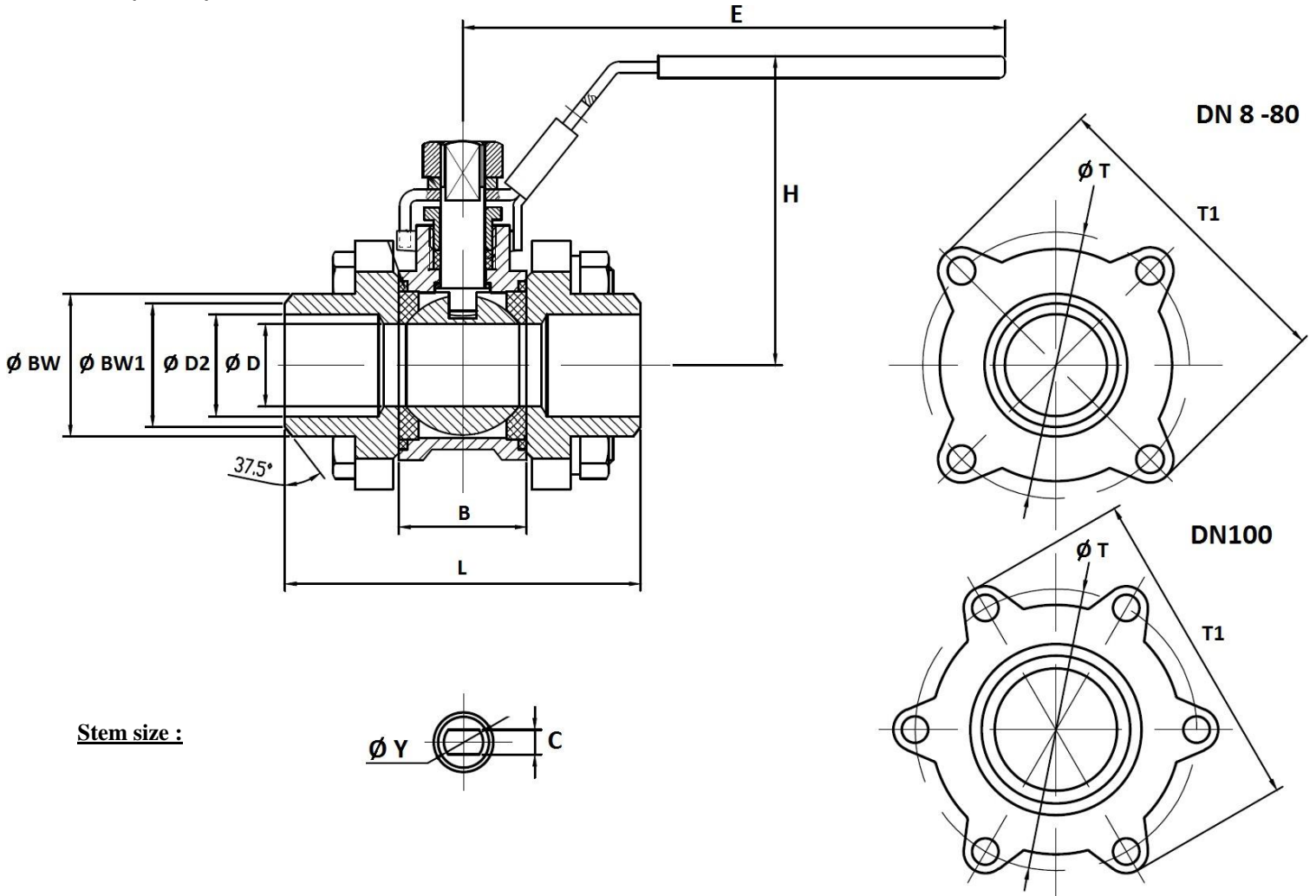
(\* : Included in gaskets kit)

Item	Designation	Materials
1	Body	ASTM A351 CF8M
2	Ends	
3	Ball	AISI 316
4*	Body gasket	PTFE
5*	Seat	PTFE filled with 15% glass fiber
6	Stem	AISI 316
7	Packing nut	AISI 304
8	Handle washer	
9	Packing gland	
10*	Thrust washer	PTFE
11	Stud	AISI 304
12	Stud washer	
13	Stud nut	
14*	Packing	PTFE
15	Locking device	AISI 304
16	Handle	
17	Handle cover	PVC

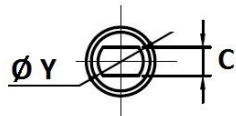


**3 PIECES STAINLESS STEEL BALL VALVE BW INITIAL RANGE**

**Size (in mm):**



**Stem size :**

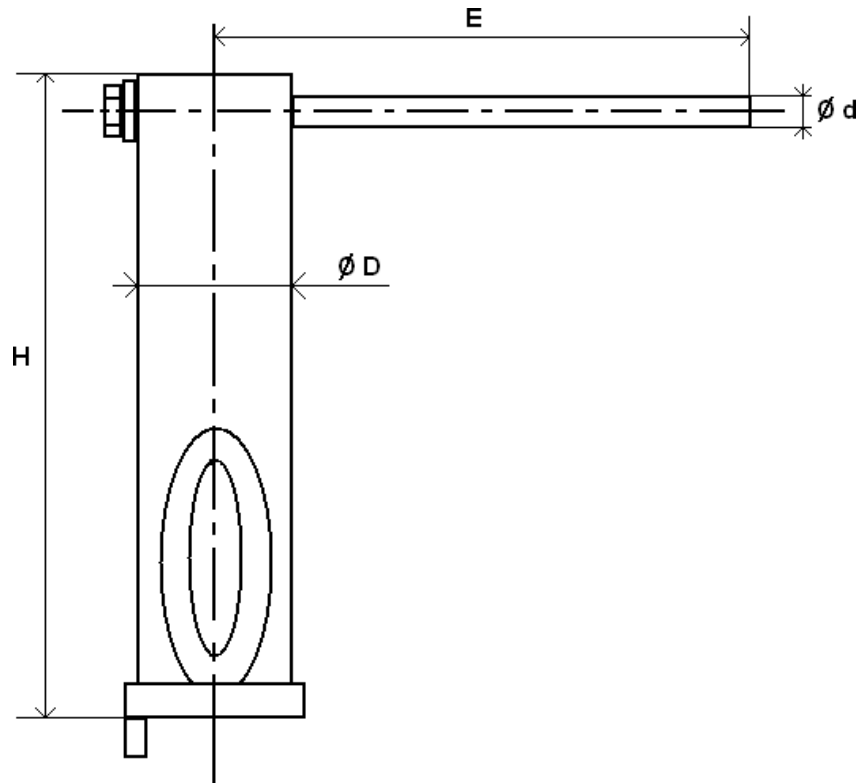


DN	8	10	15	20	25	32	40	50	65	80	100
Ø D	11.6	12.5	15	20	25	32	38	50	64	76	100
L	59	59	63.3	70.6	82	97	109	124.6	162	175	216
B	21.1	21.1	23.3	28.6	34	44	51	63	84.3	94.7	119.2
E	103	103	126	126	162	162	193	193	230	230	320
H	49	49	57	62	72	78	91	102	122	132	177
Ø Y	M8	M8	M8	M8	M10	M10	M12	M12	M14	M14	M20
C	5	5	5	5	6.5	6.5	8.5	8.5	9.8	9.8	16
Ø T	38.5	38.5	43	51.5	58	70	81.5	101	136	157	195.5
T1	51	51	57.5	66	74.5	86.5	100.5	121.5	161	185	226.5
Ø BW	15.5	17.5	22	27.3	34	42.7	48.7	61	76.5	90	115
Ø BW1	13.3	14.5	17	22.5	28.6	36	43	54	68	84	104
Ø D2	11.6	12.5	15	20	25	32	39.8	50	64	76	100
Weight (Kg)	0.30	0.30	0.47	0.6	0.93	1.44	2.1	3.32	7.2	10.78	21.14



## 3 PIECES STAINLESS STEEL BALL VALVE BW INITIAL RANGE

### STEM EXTENSION (in mm):



DN	8	10	15	20	25	32	40	50
H	126		126.3		126.3		128	
E	124		124		157.8		188.5	
Ø D	28		28		32		36.5	
Ø d	12		12		14		14	
Weight (in Kg)	0.33		0.34		0.48		0.62	



## 3 PIECES STAINLESS STEEL BALL VALVE BW INITIAL RANGE

### **STANDARDS :**

- Manufacturer certified ISO 9001 : 2015
- DIRECTIVE 2014/68/EU : For liquids and gas of Group 1
  - DN8-25 : Article 4, §3 (SEP), no CE marking
  - DN32-100 : Risk Category II, CE0038 or CE0343 marking
- Designing according to EN 12516-2
- Certificate 3.1 on request
- Pressure tests according to API 598, table 6
- BW ends according to EN 12627 (ex DIN 3239)